

PRO-BEAM GROUP

**Expert in
Electron Beam
Technology**

EUROPE | AMERICA | ASIA



Our business segments

Depending on your requirements, you can choose between contract manufacturing by pro-beam or your own customer-specific system supplied by pro-beam – with us as your competent development partner for efficient production processes. In addition, we also offer fast and flexible customer service for our system customers.



Contract manufacturing

- **Welding, microdrilling, hardening and additive manufacturing (WEBAM) using electron beam technology**
- **Coating using a thin film process (diadur®DLC)**
- **State-of-the-art production area covering 20,000 m²**
- **Largest EB contract manufacturing with over 40 machines**

Machine engineering

- **Electron beam systems for welding, microdrilling, hardening and additive manufacturing (WEBAM and EBM)**
- **Inductive heating systems (Uniform Magnetic Heating)**
- **Automated, turnkey and interlinked manufacturing solutions**
- **Automation and software solutions**
- **Process development**
- **MADE IN GERMANY**

Our service range

We offer you efficient manufacturing solutions (contract manufacturing and machinery) relating to welding, microdrilling, hardening and additive manufacturing services using an electron beam.

In addition, we also manufacture UMH systems for inductive warming and protect components against wear with our specially developed DLC thin coating technology.

E-BEAM SOLUTIONS

Additive manufacturing

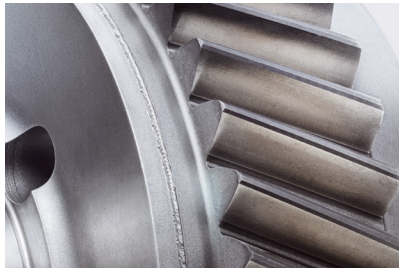


EBM (Electron Beam Melting)
Powder bed process



DED, WEBAM (Wire Electron Beam Additive Manufacturing)
Wire process

Welding

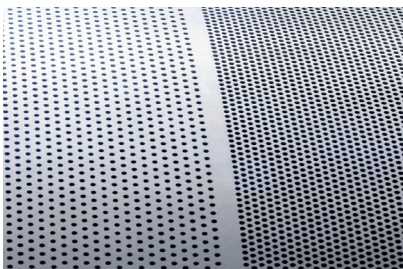


Partial hardening



TECH SOLUTIONS

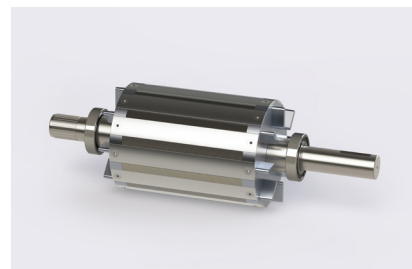
Microdrilling



DLC coating



UMH (Uniform Magnetic Heating)





Customer service

- Spare and wear parts
- Repair
- Maintenance
- Remote service
- Modernization measures
- Training and consulting
- Worldwide service

Represented across numerous industries

With our services and systems, we enhance your products and simplify manufacturing processes all over the world. We are active in the following industries, among others:

Mobility



Aerospace



Energy



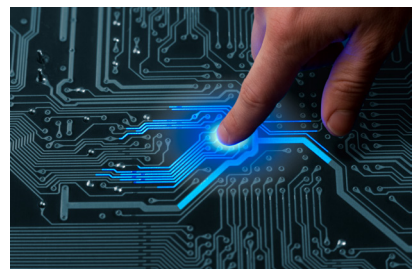
Big science



Machinery & plant systems



Semiconductor



Why pro-beam?

We offer you integrated, comprehensive support from development and contract manufacturing to your very own system – all according to your individual requirements.



OUR EXPERIENCE – YOUR ADDED VALUE

- ✓ A full-service provider meeting individual requirements (development, contract manufacturing and machine engineering)
- ✓ Agile, efficient infrastructure for industrial series production and large-scale projects
- ✓ State-of-the-art production facilities and the largest electron beam contract manufacturing facility in the world
- ✓ Comprehensive, industry-specific certifications
- ✓ R&D and networking with all relevant research institutions/ universities as well as application development for industry
- ✓ 50 years of experience in the area of electron beam technology

At a glance



400+

Employees



6

Locations



50

Years' experience



70+

Sales revenue (in million €)



40

Countries worldwide

As of: 2024

**ADVANTAGES OF ELECTRON BEAM WELDING:
FAST, EFFICIENT, PRECISE**



100% digital, thus easy to automate & reproduce



Perfect process monitoring & quality control due to high traceability



Low consumption costs with the highest level of productivity



Great flexibility in construction & process design



Versatile & metallurgically pure for a wide range of demanding metals



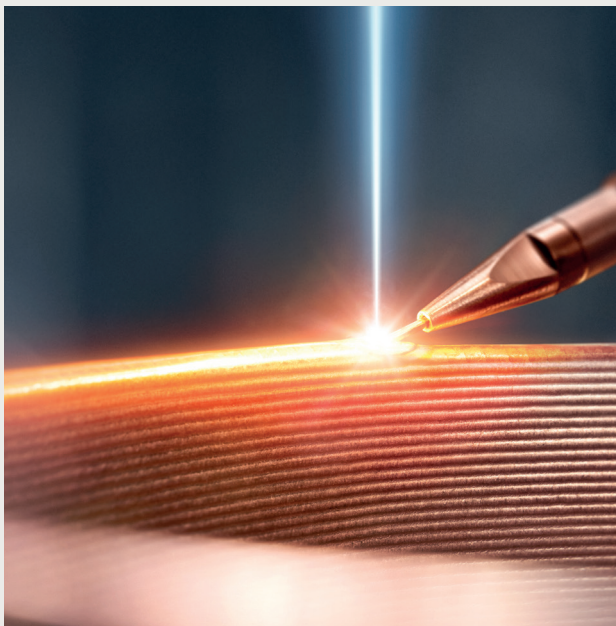
Narrow, parallel & deep weld seams, weld depths of over 150 mm



Maximum precision, practically distortion-free



Clean welding results, parts ready for immediate installation



Operating worldwide on your behalf



GERMANY

Gilching Head-quarters (Munich)



Stollberg (Chemnitz)



Burg (Magdeburg)



LEGEND

- Location
- Service center
- Sales representative
- Service center and sales representative

CHINA

Changzhou



Suzhou



USA

Aurora (Chicago)



pro-beam is an international company with several locations in Europe, North America and Asia. A global sales and service network as well as numerous sales representatives support our customers in over 40 countries.

COMPANY HEADQUARTERS

pro-beam GmbH & Co. KGaA
Zeppelinstraße 26
82205 Gilching
Deutschland

Phone: +49 89 899 233-0
E-mail: info@pro-beam.com

pro-beam.com

